



TUFTRA PENTHOUSE

ZERMATT

- FIVE STAR CHALET
- SLEEPS 4, 6 OR 10
- SELF-CATERED
- ZERMATT



TUFTRA PENTHOUSE

LOFTY HEIGHTS

In the only ski-in/ski-out district of Zermatt, Winkelmatten, there is a unique luxury property from which you can ski down to the Klein Matterhorn Express and ski back straight to the front door down the Moosweg piste! Situated by forest where often deer can be seen grazing from the balconies, these two luxurious penthouse apartments can be booked together to command the entire top floor of a chalet in this exclusive neighbourhood. Also available as separate entities, the luxury penthouses combine a beautifully achieved décor that features cladding of light mountain spruce, vaulted ceilings and oak wood floors. Sunlight filled and offering beautiful panoramic views through floor to ceiling windows, the penthouses exude a special rustic Alpine chic: one that is Scandinavian fresh, unaffected, loft styled and with great attention to detail.

Winkelmatten has very good restaurants, bars, shops and children's play areas and is nicknamed the "Beverly Hills of Zermatt", itself renowned as a resort of unspoiled beauty, surrounded by mountains. These include the Swiss icon, the Matterhorn - known locally as "Horu" - as well as the Gorner and Zmutt glaciers, which enable the resort to enjoy year round skiing and a winter ski season that stretches from November through to May.



FACILITIES

The luxury penthouse apartments can be connected or disconnected to comfortably accommodate 10 guests; one has 2 double/twin bedrooms (sleeps 4), the other has 3 double/twin bedrooms (sleeps 6). Every bedroom has an en suite bath, shower or steam shower, while each bedroom is furnished with a flatscreen TV (plus the big one in the living area). The open plan living areas are a smart use of the space and chalet's features, such as skylights in the eaves to let in even more light. The penthouses enjoy balconies on which to step out for morning sunshine and evening stars; Swarovski chandeliers sparkingly accompany the glow of the central stone fireplaces; rich fabrics and comforting sofas provide an extra splash of colour and cosiness to what is a restful, homely ambience. The kitchens fit well with the dining areas and provide breakfast bar/preparation top arrangements.

Each apartment also has its own private laundry with clothes dryers and Wi-Fi is available throughout.

The luxury penthouses together are the ideal proposition for a couple of families or a group of couples. The property would be of particular delight to avid skiers who want splendid, clean cut accommodation with plenty of character, in a great location and with views to match! When separate and unconnected, each penthouse affords privacy and total independence for occupants.

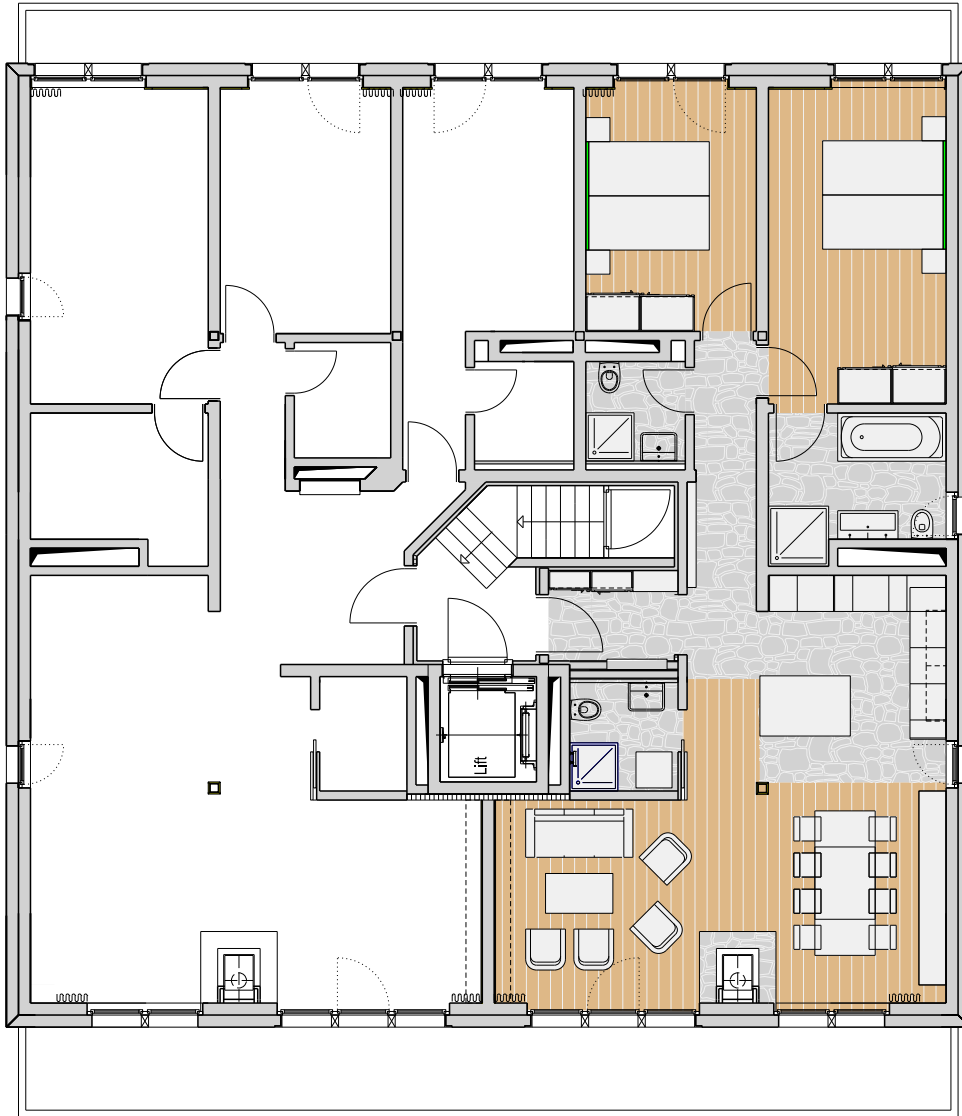
SURFACE 300sq.m



FLOOR PLANS

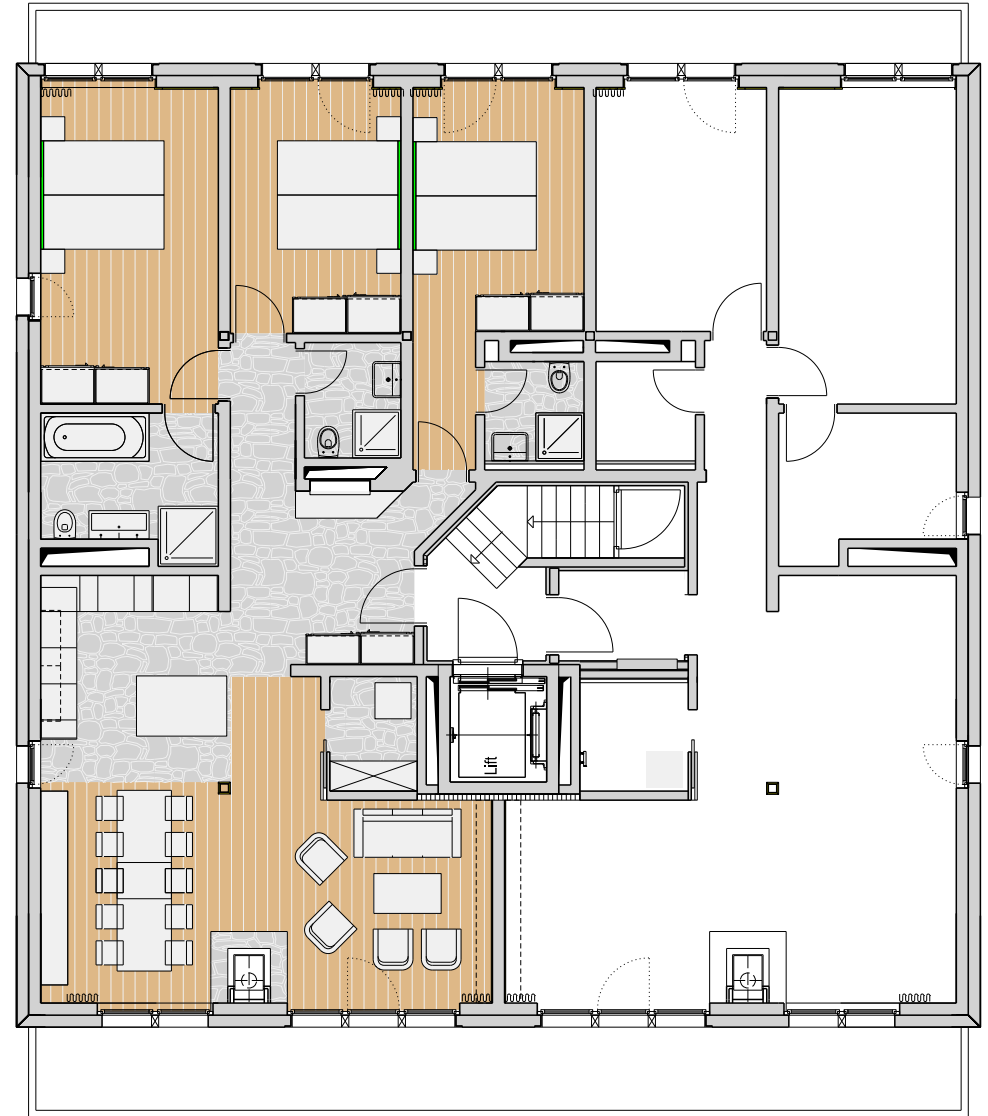
APARTMENT 1

Open plan living and dining area with fireplace and open kitchen;
2 double/twin bedrooms en suite; balcony; laundry room



APARTMENT 2

Open plan living and dining area with fireplace and open kitchen;
3 double/twin bedrooms en suite; balcony; laundry room







FEATURES

- Ski-in and Ski-out
- Fireplace
- Elevator
- Safe
- Underfloor heating
- Children accepted
- No pets allowed
- No smoking
- Satellite/Cable TV
- DVD player
- WiFi







SERVICES INCLUDED

- Luxury accommodation on your chosen dates
- Exclusive use of the property and its facilities
- All linen, utilities and firewood
- Linen and towel changes at regular intervals
- Daily cleaning
- Domestic staff
- Luxury bath products
- Wi-Fi Internet access
- In-resort concierge service

OPTIONAL SERVICES

We are able to arrange all the services that you would find both in a five star hotel and in a private home run by professional staff. Our concierge and client servicing team can arrange airport transfers, in-resort transport, vehicle rentals, ski adventures and instructors, child care, massage and beauty treatments, sport and leisure activities and reservations to ensure a memorable stay. Please let us know what your requirements are or call us for more information.



LOCATION

Nearest Airport: Geneva (GVA), Zurich (ZHR)
Airport: 3.5 (GVA; ZHR) hours by car
Slopes: Ski-in/ski-out



TUFTRA PENTHOUSE
ZERMATT