

CALA 201

FRANCE

VAL D'ISÈRE

CALA 201

VAL D'ISÈRE, FRANCE | Sleeps 8 + 2



CALA 201, an exciting new addition to the Val d'Isère portfolio.

DESCRIPTION



Cala 201 is a fabulous four-bedroom apartment, spread over two floors, located in the highly sought-after La Legettaz area of Val d'Isère. It is part of a fantastic brand-new development which overlooks the La Face piste. It is only a short stroll from the nearest lifts and guests can ski to within metres of the building. Newly completed and ready for the 2019/20 season, this is the ideal property for a family or a group of friends seeking convenience and luxury in one of the world's most sophisticated ski resorts.

The open plan living and dining area is spacious and welcoming. Decorated with a largely neutral palette, rich woods and textured fabrics, the effect is a refined and elegant social space, enriched by carefully selected art works that colour the room. Up to ten guests can be seated at the large dining table which is overlooked by a stylish, contemporary kitchen complete with all the essentials and with ample storage space to maintain a clutter-free space. Glamorous and practical in equal measure, this is the place for long, slow meals shared with friends and family. The focal point of the adjoining living area is a circular central fireplace, creating a warm and cosy ambience. A large L-shaped sofa and a couple of arm chairs provide seating space for up to eight guests. The living area has been finished in neutral greys and natural tones with accents of blues to deliver a cool and modern space. Floor to ceiling windows frame incredible views of the world-famous La Face piste. There is a WC in the entrance hallway for visitors.

Taking the staircase down, you will enter the sleeping floor, home to four stylish bedrooms, each uniquely decorated. The sumptuous master bedroom is a tranquil space where you will wake feeling rested and to picturesque mountain views. The elegant en-suite bathroom is found through Crittal-style doors and has a roll top bath with a separate open shower. This room has access to a terrace where guests can enjoy their morning coffee. The terrace is shared with the second bedroom on this floor, a double bedroom with an en-suite shower room and access to a shared WC. Across the hallway, is a charming quad bunk room, with a cosy TV snug where little ones can snuggle up and watch a film at the end of the day. There is a separate shower room further along the hallway as well as a separate WC which the quad room shares with the double bedroom. The final bedroom on this floor is found at the end of the hallway, it has a double bed and an en-suite bathroom with a separate shower.

There is also a utility room on this floor with private laundry facilities.

The apartment also has two indoor parking spaces with electric charging points.

Cala 201 is a beautifully appointed apartment, and it is the perfect base from which to sample Val d'Isère's sparkling social scene or world-class skiing.

FACILITIES



INTERIOR

- Sleeps 8 + 2
- 174 Square metres
- 4 Bedrooms
- 7 Individual beds
- 4 Bathrooms
- 1 Additional WCs
- 10 Dining table seats
- 10 Living area seats

APPLIANCES

- TV/DVD
- Bluetooth speaker
- Smart TV
- Sonos
- Wifi

WELLNESS AND RELAXATION

- Balcony

ADDITIONAL

- Cot/high chair available
- Private laundry facilities
- Indoor Parking: 2



LAYOUT



SECOND FLOOR

- Open plan kitchen, living and dining area
- Guest WC

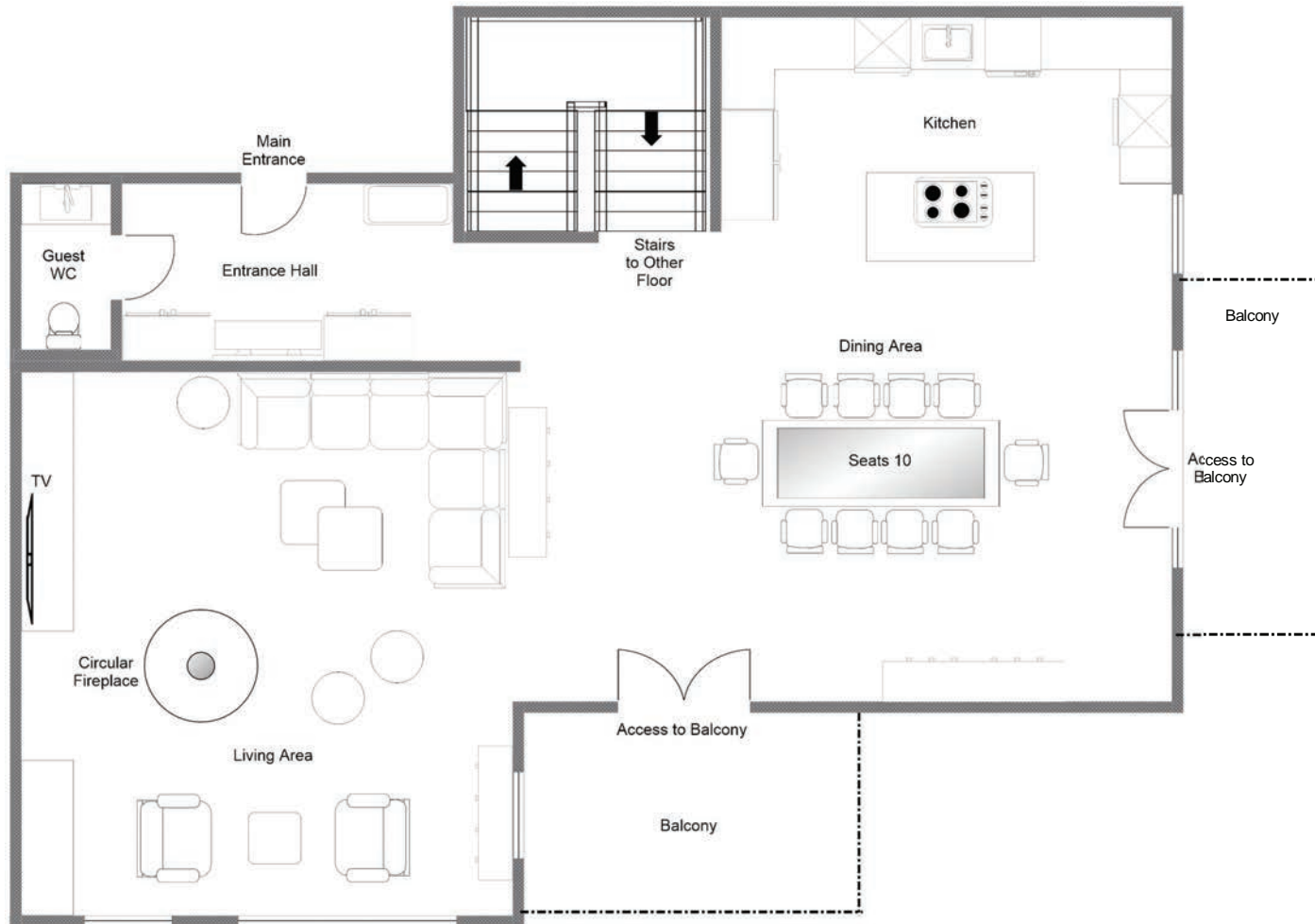
FIRST FLOOR

- Master bedroom (en-suite bathroom with separate shower, WC)
- 1 Double bedroom (en-suite shower room)
- 1 Double bedroom (en-suite bathroom with separate shower, WC)
- 1 bunk room (sleeps 4, separate shower room)
- Laundry room



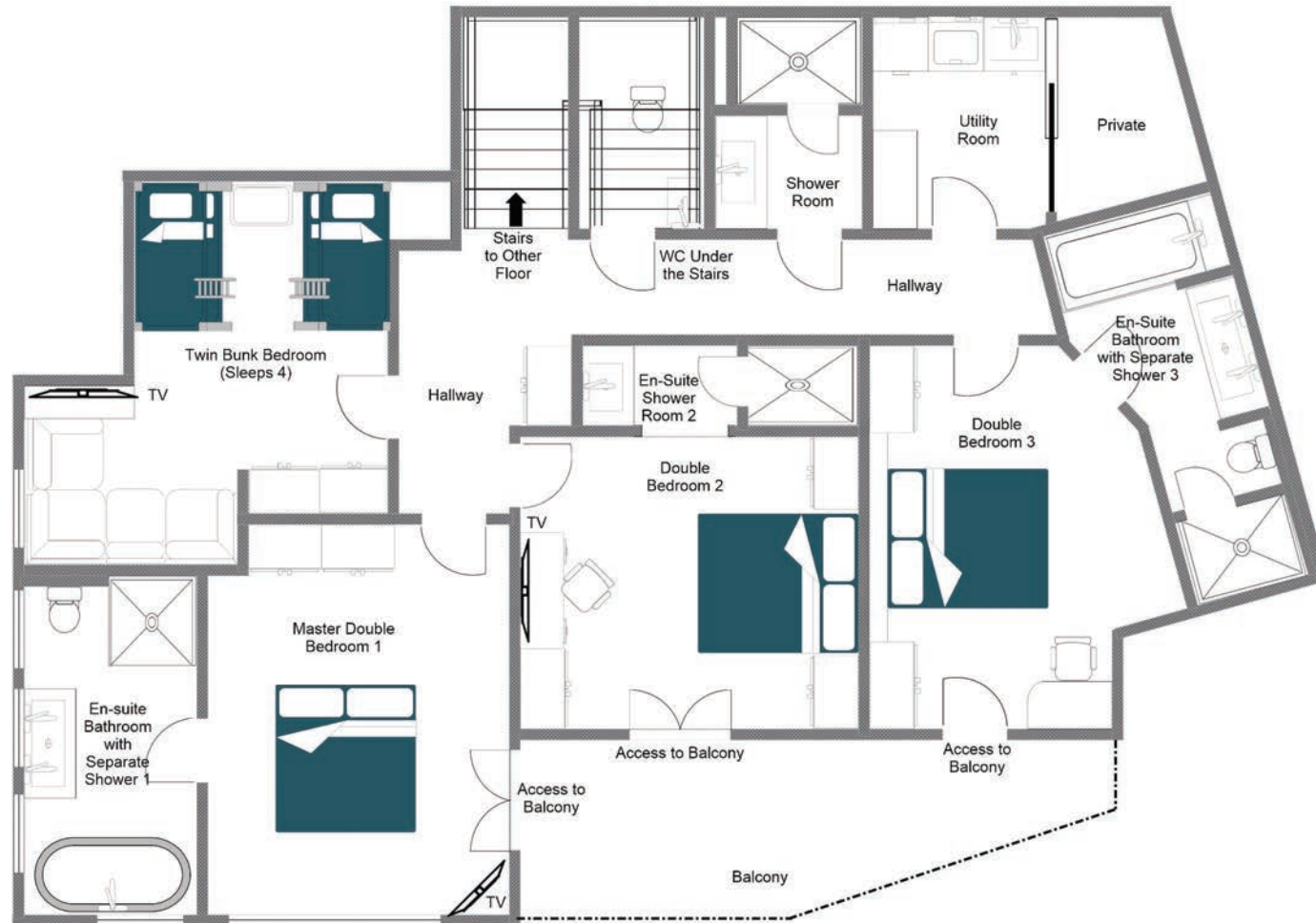
FLOOR PLAN SECOND FLOOR

FOR ILLUSTRATION PURPOSES ONLY



FLOOR PLAN FIRST FLOOR

FOR ILLUSTRATION PURPOSES ONLY







LOCATION



ADDRESS

Val d'Isère, France

PROXIMITY

Solaise - 10-minute walk or 5-minute ski

L'Olympique - 10-minute walk or 5-minute ski

Centre of Val d'Isère - 4-minute drive

GOOGLE CO-ORDINATES

45.442992, 6.975692

